



PARTNERING ART AND CLIMATE SCIENCE



THE EVENT: 2016 SURGE FESTIVAL

The Skagit Climate Science Consortium collaborated with artists and the Museum of Northwest Art on the successful second Surge Festival



As part of their ongoing work to find new ways to spark community conversations about local climate impacts, Skagit Climate Science Consortium (SC²) members participated in the second Surge Festival at the Museum of Northwest Art (MoNA) in La Conner. The first Surge Festival, held in September 2015, was a successful two-day event featuring collaborative art projects developed by artists, research scientists, and educators. Building off the success of the 2015 event, which was attended by over 300 people, MoNA planned a week-long festival for September 17 through 25, 2016. The 2016 Surge Festival provided SC² with an exciting opportunity to start new conversations and build new collaborations. The Skagit Land Trust, Skagit Watershed Council, and Swinomish Indian Tribal Community were also partners in the event.



In addition to directly collaborating with artists, SC² also provided posters and handouts sharing information on key climate change topics, including sea level rise, flooding, air temperature, high tides, forest fires, salmon vulnerability, adaptation and resilience, and sediment. SC² also provided projections of photographs showing the dramatic retreat of several Skagit Watershed glaciers.



The festival included live performances, speeches from Brian Cladoosby (Chairman of the Swinomish Indian Tribal Community) and Steve Moddemeyer (a sustainability expert), and a panel discussion with artists and SC² members. Over 85 people attended the panel discussion and over 700 people attended the event overall—a rousing success.



WHAT'S NEXT?

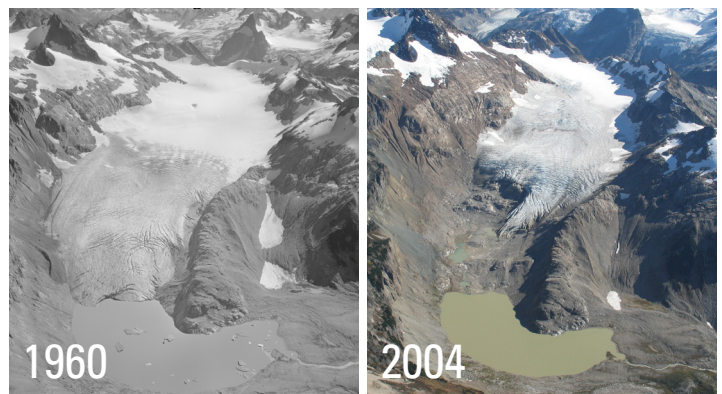
Based on the continued success of the Surge Festival, the Museum of Northwest Art has decided to make Surge part of its schedule of exhibits in 2018. This means that, instead of a week, the exhibit will be up for 3 months. There will also be more time for scientists and artists to collaborate in advance of the event. There will also be time for Museum education staff to work with regional schools for tours of the exhibits as part of their STEM curriculum. SC² scientists are excited at the continued opportunity for collaboration and for communication with the public that the extended 2018 Surge exhibit will provide.

"Climate change tends to have a doom-and-gloom, the world-is-coming-to-an-end kind of perspective. We were interested in finding ways to provide perspective to the public that would inspire more curiosity."

Carol MacIlroy, SC² Administrator, as quoted in the Skagit Valley Herald

Materials SC² contributes to the conversation:

- Posters that were part of the 2016 Surge Festival
http://www.skagitclimatescience.org/wp-content/uploads/2016/07/POSTERS_MoNA-2016-09_Combined_.pdf
- Infographics and descriptions of key climate change issues such as sea level rise, flood risk, and sediment
<http://www.skagitclimatescience.org/events/educational-resources/>
- An interactive web map displaying information about future projected flood levels in the Skagit Valley
<http://www.skagitclimatescience.org/flood-scenario-map/>



The photos above show the retreat of the South Cascade Glacier. These and other materials are available on SC²'s website at: www.skagitclimatescience.org.



The Skagit Climate Science Consortium (SC²)

SC² is a nonprofit 501c(3) organization consisting of scientists working with local people to assess, plan, and adapt to climate related impacts. Composed of research scientists from universities and federal, municipal, and tribal governments and agencies working in the Skagit basin, SC² members seek to understand how the landscape, plants, animals and people may be affected by changes in the patterns of rain, snow, temperature, storms and tides.

www.skagitclimatescience.org

Visit our website to learn more about who we are, what we do, and the various resources we can provide.

Or contact Carol MacIlroy:
cmacilroy@gmail.com or 206-293-4741.